

## INSTALLATION INSTRUCTIONS AND SPECIFICATIONS

### MODEL: SL112 & SL106 FIXED TRIM SERIES

This data sheet contains information necessary to ensure compliance with the New Zealand Electrical Code of Practice for the Installation of Recessed Luminaires and Auxiliary Equipment NZECP 54.

**Caution:** Recessed luminaires and their auxiliary equipment may pose a risk of fire or damage to property if not installed and maintained correctly.

Voltage: 110 - 240 volts 50 / 60 Hz  
Wattage: 6-12W

Lamp type(s): *LED (Light Emitting Diode)*

Installation hole diameter: 80-83mm  
Minimum side clearance from combustible materials (SCB): 10mm  
Minimum height clearance from top of luminaire (HCB): 20mm  
Fire resistance rating or acoustic rating: *N/A*

Recessed Luminaire Classification – refer to Diagram A  
Luminaire moisture transfer category: *C*  
(*O* = open, *R* = restricted, *C* = closed, (or other as specified)  
Thermal insulation clearance class: *A*  
(*A* = abutted, *S* = standard – 100 mm, \* = specified)

#### **AUXILIARY EQUIPMENT:**

Auxiliary equipment type: *LED Driver*  
Dimensions: H= 28mm, L= 114mm, W = 44mm  
Lamp type(s): *LED*  
*PRI: 220-240V – 50/60Hz*  
*SEC: 700mA, 6-26V*

Recommend clearance from luminaire: 70 mm

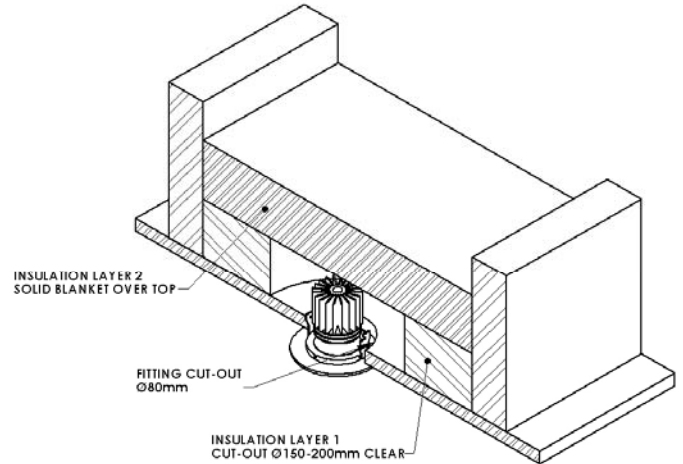


Diagram A

#### **IMPORTANT INFORMATION:**

1. The LED Light must be installed by qualified electricians only
2. Connect the LED and mains power as per Diagram B – the LED will be permanently damaged if not wired correctly
3. Switch off the power supply before installation
4. Switch off the power supply and wait 5 seconds before making any change in the secondary circuit. (eg replacing LED)
5. Check if the LED units are current type, also check the maximum current. If incorrectly connected they can be damaged.
6. Never connect more LED than the maximum forward voltage or wattage

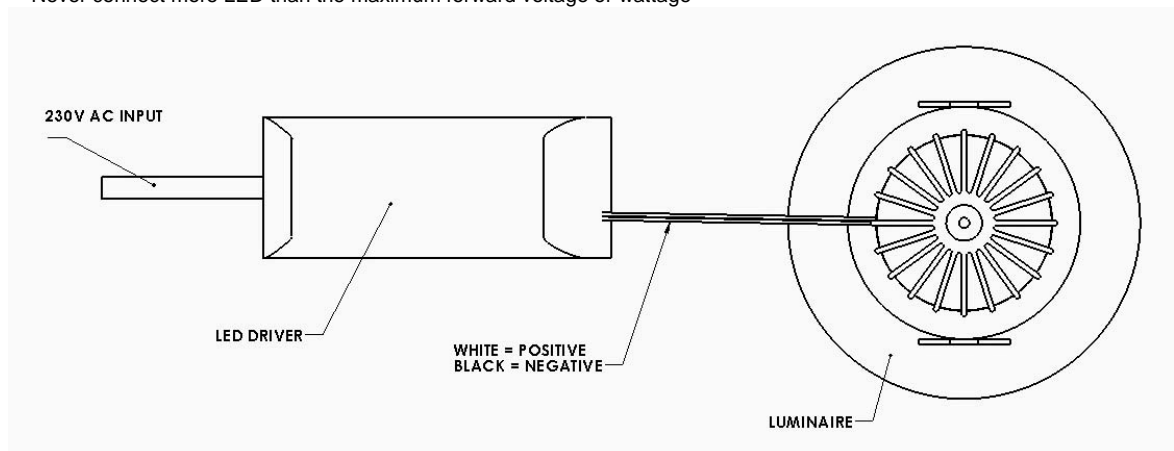


Diagram B