

L05016i LEDlight 1-20VA 0.25-1A DIM 1-10V, pulse

Features

The L05016i LEDlight is a stabilized and adjustable current source supplying two output channels. Adjustments are easily made with a build-in single potentiometer. Channel one can drive from 250mA up to 1A max. Channel two can drive from 250mA to 500mA max. The Driver is dimmable with a standard 1-10V device, a potentiometer or with a pulse switch.

Specifications

| | |
|----------------------------------|--|
| System input voltage nominal | 110-240Vac |
| System input voltage range | 110-240Vac |
| System input frequency | 50/60Hz |
| System input power | 24W |
| Output current channel one | 250-1000mA stabilized adjustable current source. |
| Output current channel two | 250-500mA stabilized adjustable current source. |
| Operating voltage output | 33Vdc max |
| Driver efficiency | 85% |
| Power factor | 0.9C |
| Nominal line current | 110V: 0,23A 240V: 0,11A |
| Output power | 240V: 20 Watt 110V: 15 Watt |
| LED type | Current (U_{nom} 230-240VAC) |
| Number of LEDs at channel 1 | 1-9 U_f 3.2V Max. |
| Number of LEDs at channel 2 | 1-9 U_f 3.2V Max. |
| Dimmer type | 1-10V, potentiometer or pulse switch (SELV EQ.) |
| Load Operating Frequency | PWM 230Hz. |
| Open Circuit Voltage | 33Vdc |
| Short circuit protection | Yes |
| Open circuit protection | Yes |
| Overvoltage protection | Yes |
| Load voltage Setting Time (>90%) | 1 second |
| Thermal protection | Yes, against overheating |
| Output current overshoot | No |
| Output Isolation | Yes SELV |
| Ambient Temperature range (Ta) | -20 +50° C |
| Leads Primary | H05RN-F 1 mm ² |
| Leads Secondary | 0.1 mm ² – 0.5 mm ² |
| Lead Connection Method | Clamp |
| Mounting Method | Screw |
| Weight | 100 gram |
| Case color | Grey / Blue |
| Maximum Case temperature (Tc) | 85°C |
| Storage Temperature range | -20 +50° C |
| Case dimensions (LxWxH) | 111 x 52 x 23,5 mm |



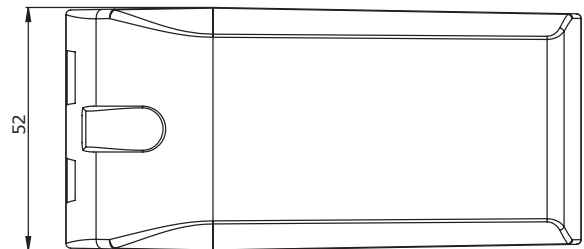
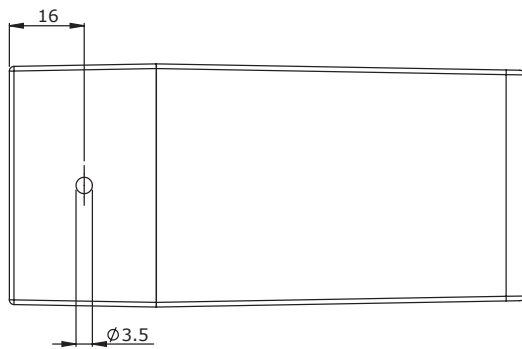
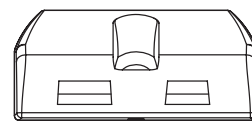
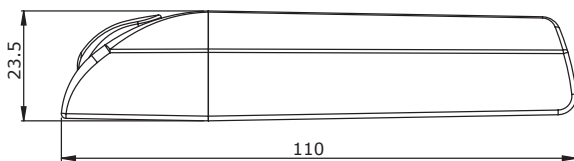
L05016i LEDlight 1-20VA 0.25-1A DIM 1-10V, pulse

Approvals

CE, KEMA KEUR, ENEC-05

Complies with standards

EN 61547, EN 55015, EN 61000-3-2, EN 62384,
EN 61347-2-13



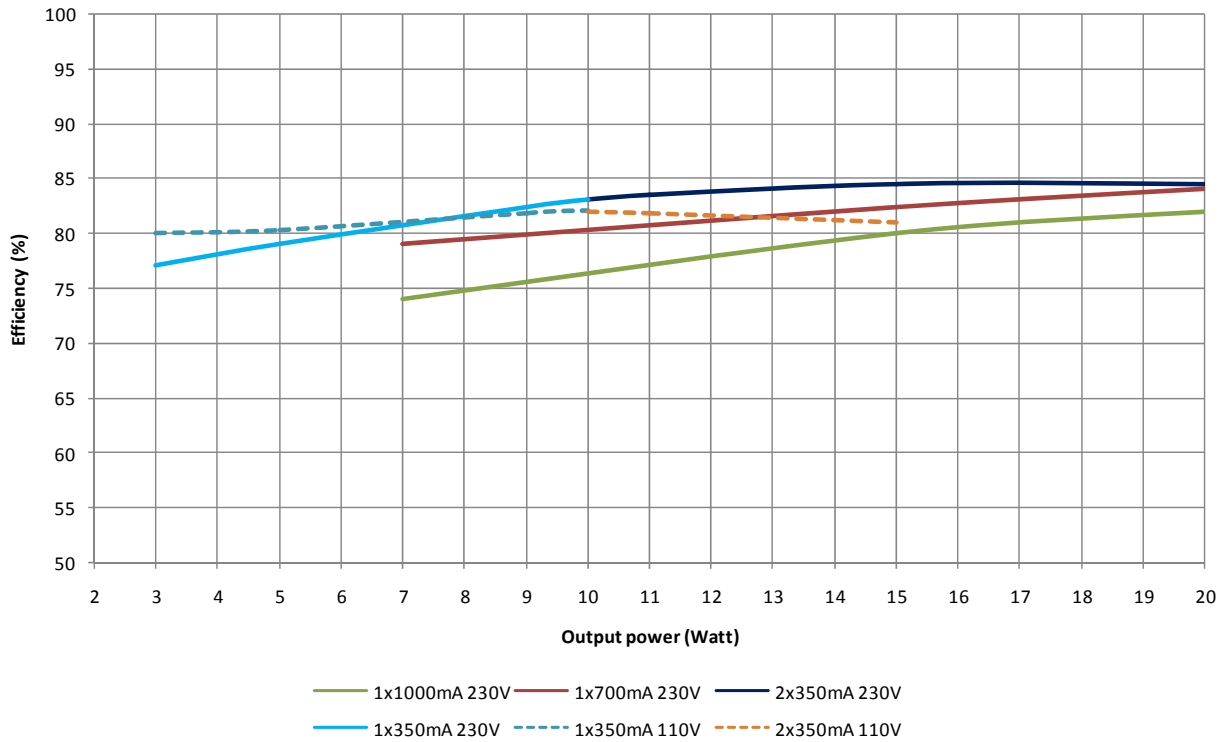
Order

L05016i Ledlight 1-20VA 0.25-1A DIM 1-10V, pulse L05016i

Disclaimer

©2010, Lumotech Holland B.V. All rights reserved. Designs and specifications may change without prior notice.

Efficiency



Power factor

