



E-LIGHTZ



Designed to replace 100W, 75W or 50W incandescent recessed lights, the E-LIGHTZ make the perfect retrofit to reduce energy consumption by as much as 88 percent. With up to 1000 lumen output and wide 110 degree beam angles, if you are building new, fewer luminaires may be needed than with traditional fittings. E-LIGHTZ provide a high quality light in Professional Series (90+CRI) and are available with lumen outputs ranging from 470Lm to 1000Lm; in Sunset Dimming or fixed colour temperatures. E-LIGHTZ are perfect for general lighting with a lower power version for bedrooms and hallways where minimal running costs and maximum mood are desired. With IP65 ratings they can be used in any room and outdoors under soffits.



Silver



Black

adapter plates (option)
to retrofit an oversized recessed luminaire.

- | | |
|---|---|
| 155mm diameter (100-140mm diameter hole) | 185mm diameter (100-170mm diameter hole) |
| SLSUP-130-155-B (black) | SLSUP-130-185-B (black) |
| SLSUP-130-155-S (silver) | SLSUP-130-185-S (silver) |
| SLSUP-130-155-W (white) | SLSUP-130-185-W (white) |



LED Wide-Angle Downlight - *dimnable*

Pure Colour - *Professional Series: 90+ CRI*

	SL40 Professional Series	SL40LP Professional Series	SL40SD Sunset Dimming
Type - wide angle recessed downlight	✓	✓	✓
Beam angle - 110°	✓	✓	✓
Colour temp	2700K, 3000K or 4000K	2700K, 3000K or 4000K	Full power = 3000K, Dimmed power = 2000K
CRI / R9	90+ CRI / R9 > 50	90+ CRI / R9 > 50	90 CRI / R9 > 80
Trim colours - white / silver / black	✓	✓	✓
Delivered Lumens*	1060 Lumen	590 Lumen	880 Lumen
IP rating - IP65 (front face)	✓	✓	✓
Insulation coverable Luminaire	Yes, IC-F & IC-4	Yes, IC-F & IC-4	Yes, IC-F & IC-4
Dimensions - 130mm x 35mm	✓	✓	✓
Min hole depth - 37mm	✓	✓	✓
Cutout - 100 - 120mm	✓	✓	✓
Dimming - phase cut dimming as standard	✓	✓	✓
Driver (included)	SL302D - 300mA (Dali option also available)	SL152D - 150mA	SL302D (Dali option also available)
Driver covered	Yes, SL302D	Yes, SL152D	Yes, SL302D
Luminaire power	11.1W	5.5W	10.9W
System power	12.4W	6.8W	13.4W
Efficacy*	85.5 Lm/W	86.8 Lm/W	67.7 Lm/W
PF - 0.95	✓	✓	✓
Expected life (L70, TM21) - up to 60,000 hours	✓	✓	✓
Replaces	100W light bulb or better	50W light bulb or better	Traditional 75W downlight
HCB & SCB - 0mm clearance to normally flammable building elements	✓	✓	✓

*Specifications are given for the Professional series 3000K colour. Specifications for other colours may differ slightly.

how to specify

e.g. code = SL40-30-P-W

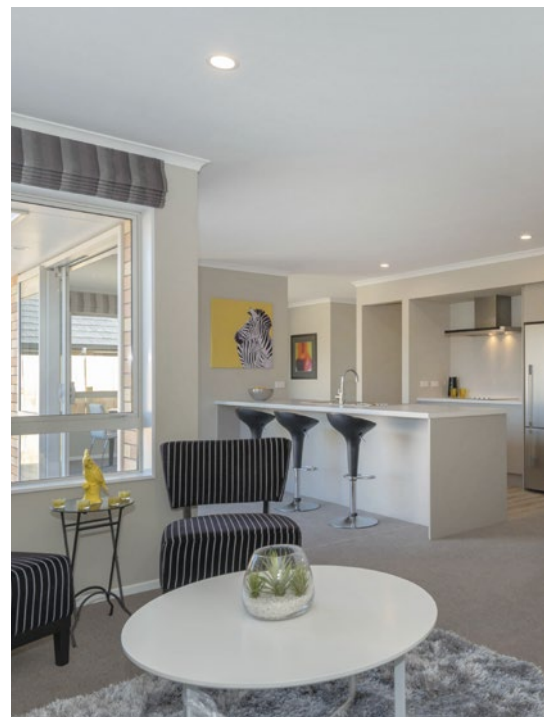
Product	Colour Temp K	Version	Pure Colour Series	Trim Colour
SL40	27 = 2700K 30 = 3000K 40 = 4000K	○ = Standard Power LP = Low Power	P = Professional	W = White S = Silver B = Black

Sunset Dimming e.g. code = SL40-SD-P-W

SL40	SD = Sunset Dimming		P = Professional	W = White S = Silver B = Black
------	---------------------	--	------------------	--------------------------------------

Special order options (please contact Switch Lighting):

- Dali driver
- 80+ CRI in Classic Series for higher lumen outputs (not available in Sunset Dimming)



Residential home, Hamilton | Milestone Homes