

Mini-LIGHTZ



Natural Anodise
Aluminium



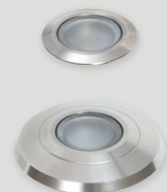
Black Anodise
Aluminium

Friction Fit
SL201



Copper

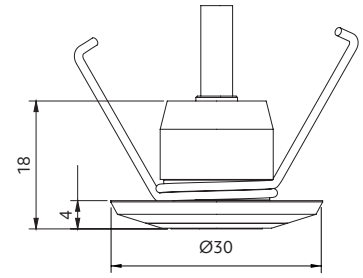
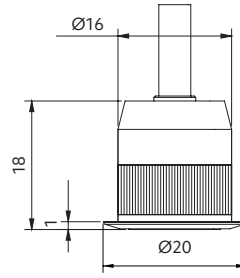
Spring Mount
SL211



316 Stainless Steel

Mini-LIGHTZ

- + tiny form factor
- + 1W – economical
- + use outdoors under soffits / garden lighting
- + use indoors for shower / accent lighting
- + IP67



Beam control options

Beam angle



CCT options

CCT

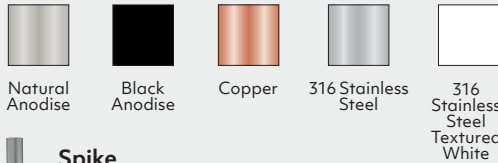


CRI

CRI 80

Other options

Trim colour



Spike

(Ø20 x 200mm) for SL201

SLSPK-B	Black Anodise
SLSPK-N	Natural Anodise
SLSPK-C	Copper
SLSPK-SS	316 Stainless Steel

Use with

LED protector (page 86) to protect from power and wiring hazards
Waterproof cable connectors (page 87)

Power supply – constant current

Ordered separately

12 VDC circuit:

1-3 lights LDD350LW power supply
1-11 lights (max) LDB300LW power supply

24 VDC circuit:

1-7 lights LDD350LW power supply
1-11 lights (max) LDB300LW power supply

230V circuit:

1-4 lights non-dimming Mini 350mA power supply
1-8 lights non-dimming use L05020 driver
4-8 lights dimming use L05021 driver
9-18 lights non-dimming L05049 driver (not compatible with LED protector)

Product information

(example: 2700K)

Luminaire power (W)	Delivered lumens (lm)	Forward voltage (V)	Insulation coverable		
			NZ	AU	UK/EU
1	90	3	IC-F	IC-4	✓

SL201 Friction fit



SL211 Spring mount



how to specify Mini-LIGHTZ

Please confirm model option availability from our website. Note: driver is ordered separately.

e.g. code = SL201-70-27-N

Model	Beam	CCT	Trim Colour	Market
SL201	30 = 30°	27 = 2700K	N = Natural	■ = NZ
SL211	70 = 70°	30 = 3000K	B = Black anodise	1 = Aust
		40 = 4000K	C = Copper	2 = UK
			SS = 316 Stainless steel	3 = EU
			TW = 316 Stainless steel textured white	

Please see www.switch-lighting.co.nz for full specifications, lux levels, SDoCs, ies files and installation instructions.



Warranty
5 Years

L70 (60,000 h)

