

# Multi-LIGHTZ



**SL41-EL**

316 Stainless Steel Matt



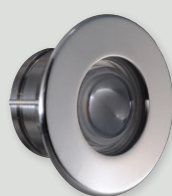
**SL41-EL**  
Eyelid

316 Stainless Steel Black



**SL41-EL**  
Eyelid

316 Stainless Steel  
Textured White



**SL41**  
Beam 70°

316 Stainless Steel

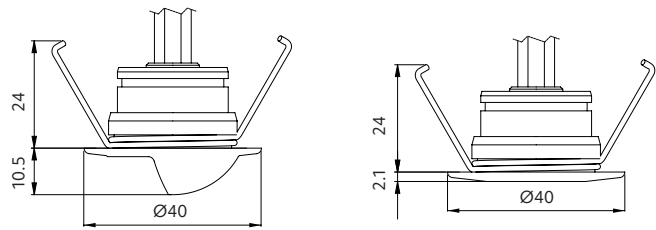


**SL41**  
Beam 90°

316 Stainless Steel Matt

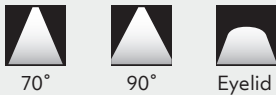
# Multi-LIGHTZ

- + constant voltage
- + over voltage protection
- + use outdoors for step / path / deck lighting
- + use indoors for stairs / hallways
- + 316 stainless steel
- + IP67



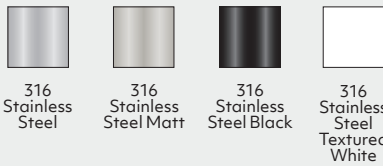
## Beam control options

### Beam angle



## Other options

### Trim colour



SL41-EL only

### Use with

Waterproof cable connectors (page 87)

## CCT options

### CCT



### CRI

CRI 80

## Power supply – constant voltage (ordered separately)

Q4-12V-20W (IP20) 1-11 lights in parallel  
 SLDV-12V-40W (IP67) 1-21 lights in parallel  
 SLDV-12V-75W (IP67) 1-45 lights in parallel  
 Higher output power supplies available  
 Please refer online for cable size requirements  
 (voltage drop)

## Product information

(example: 2700K)

Power supply (VDC)	Luminaire power (W)	Delivered lumens (lm)	Insulation coverable		
			NZ	AU	UK/EU
12	1.6 (130mA)	100	IC-F	IC-4	✓



Size 40x40mm



Cut-out Ø32mm



Hole depth >40mm



## how to specify Multi-LIGHTZ

Please confirm model option availability from our website. Note: driver is ordered separately.

e.g. code = SL41-70-27-SS

Model	Beam	CCT	Trim Colour	Market
SL41	70 = 70° 90 = 90° EL = Eyelid	27 = 2700K 30 = 3000K 40 = 4000K	SS = 316 Stainless steel MS = 316 Stainless steel matt B = 316 Stainless steel black TW = 316 Stainless steel textured white (SL41-EL only)	■ = NZ 1 = Aust 2 = UK 3 = EU

Please see [www.switch-lighting.co.nz](http://www.switch-lighting.co.nz) for full specifications, lux levels, SDoCs, ies files and installation instructions.



Warranty  
5 Years

L70 (50,000 h)

