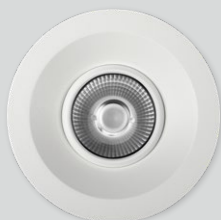
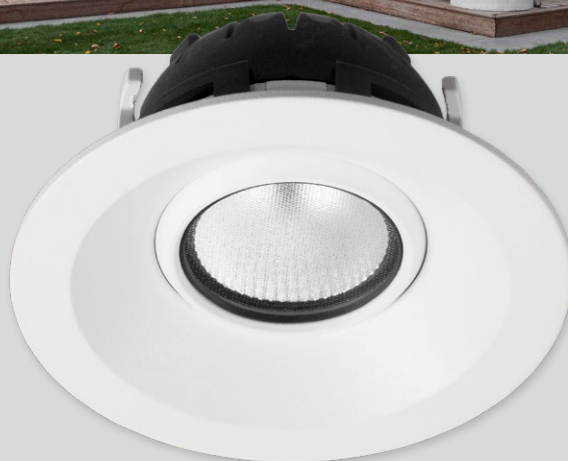


ZELA *Tilt 2*



SLDL234T
Lens
Beam 9° 15° 20°
Spot lighting



SLDL236T
Honeycomb
30° 40°
Anti-glare lighting



SLDL230T
Clear glass
Beam 40° 55°
Task | General lighting



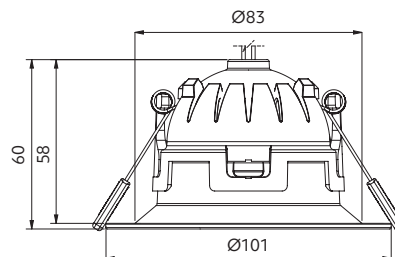
SLDL231T
Prismatic diffuser
Beam 40° 55°
General | Task lighting



SLDL233T
Opaque diffuser
Beam 90°
Wide angle lighting

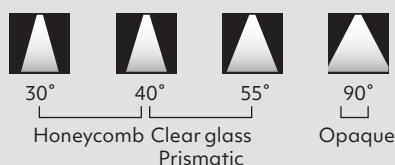
ZELA Tilt 2

- timeless modern design, recessed for low glare
- general all purpose luminaire
- fully adjustable 360° gimbal
- suitable for indoor use and exterior under soffits
- IP65 front
- constant current



Options

Beam angle



Trim colour



CCT



¹ Sunset Dimming is available in 30°, 40° and 55° in Professional series.
² Tunable White is available in 20°, 30°, 40°, and 55° in Art series.

CRI

Professional series (P) CRI 90-94 Art series (A) CRI 95-98

Use with

ZELA adapter plates for retrofit installations

Driver included – to be specified

Phase cut Dimming
 DALI 2 Tunable White
 DALI 2 Dimming
 SLiC Casambi Tunable White
 SLiC Casambi Dimming

Product information

Example: White, prismatic, 40°, 3000K, CRI 90, phase cut driver
 Contact Switch Lighting for data of other variants

Driver (mA)	Power (W)	Delivered lumens (lm)	Insulation coverable		
			NZ	AU	UK/EU
100	4.3	400	IC-F	IC-4	✓
150	6.4	570	IC-F	IC-4	✓
180	7.7	660	IC-F	IC-4	✓
220	9.4	780	IC-F	IC-4	✓
260	11.1	880	IC-F	IC-4	✓



Tilt Angle
28°



Size
101x58mm



Cut-out
Ø83-89mm



Hole depth
>63mm*



Front

*Specification is for ceiling material ≤ 13mm with a phase cut driver.

how to specify ZELA Tilt 2

Please confirm model option availability from our website. **Not every combination is compatible.**

e.g. code = **SLDL231T-4030P-TWD11**

Model	Beam	CCT	CRI	Trim Colour	Driver	Market	
SLDL234T = Lens	09 = 9° 15 = 15° 20 = 20°	24 = 2400K 27 = 2700K 30 = 3000K 40 = 4000K	P = 90-94 A = 95-98	TW = Textured White TB = Textured Black	Phase cut Dimming D08 = 100mA (4.3W) D09 = 150mA (6.4W) D15 = 180mA (7.7W) D10 = 220mA (9.4W) D11 = 260mA (11.1W) DALI 2 Tunable White D42 = 180mA (8.3W) D43 = 230mA (10.1W) D44 = 260mA (11.9W)	DALI 2 Dimming D02 = 180mA (8.3W) D03 = 230mA (10.1W) D04 = 260mA (11.9W) SLiC Casambi Tunable White D54 = 260mA (11.8W) SLiC Casambi Dimming D57 = 180mA (7.7W) D59 = 260mA (11.1W) Check online for other driver options.	= NZ 1 = Aust 2 = UK 3 = EU
SLDL236T = Honeycomb	30 = 30° 40 = 40°	SD = Sunset Dimming S2 = Tunable White					
SLDL230T = Clear glass SLDL231T = Prismatic	40 = 40° 55 = 55°						
SLDL233T = Opaque	90 = 90°						

Please see www.switch-lighting.co.nz for full specifications, lux levels, SDoCs, ies files and installation instructions.



Warranty
7yr Luminaire
5yr Driver

L70 (60,000 h)

